

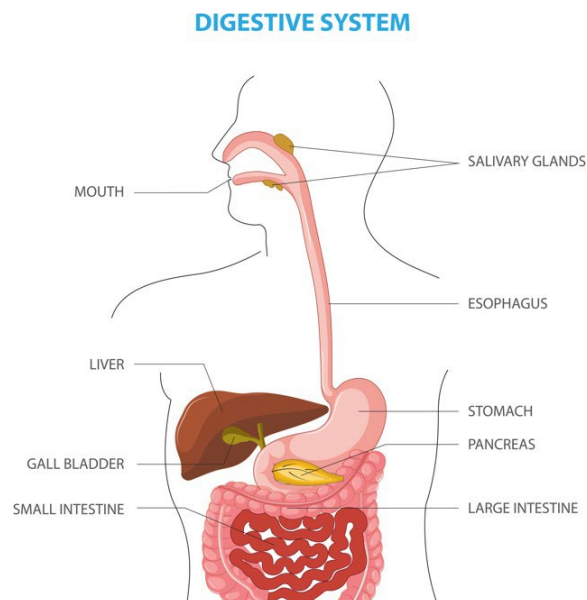
Grade	1
Unit/Domain	The Human Body
Copyright (Original or Public Domain)	Original
Lexile/Average Grade Level	700L
Flesch Kincaid	4.3
Word Count	428
Title	Your Amazing Digestive System!
Author	Cari Meister

Your Amazing Digestive System!

by Cari Meister

(1) The food you put in your mouth has important nutrients that your body needs for energy. But how does an apple go from food to fuel? Let's take a look at how the process works.

(2) The digestive system breaks food down into simpler things that the body can use. The main parts of the digestive system are the mouth, esophagus, stomach, small intestine, and large intestine. The liver, gallbladder, and pancreas also help the body with digestion. The liver makes bile that breaks down fat. The gallbladder stores bile. The pancreas makes enzymes that help break down food.



<https://www.istockphoto.com/vector/human-digestive-system-anatomical-vector-illustration-gm1441954838-481505639?searchscope=image%2Cfilm>

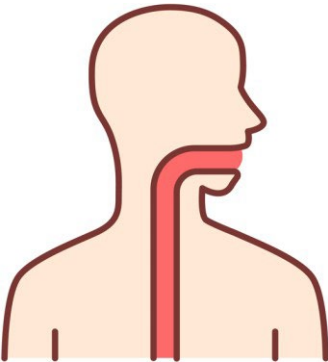
The Mouth



<https://pixabay.com/vectors/mouth-smile-teeth-hygiene-lips-5379259/>

(3) When you take a bite out of an apple, your teeth cut and crush it. Your tongue, a big muscle, helps push food against your teeth as you chew. Saliva helps break down the chunks.

The Esophagus



<https://www.istockphoto.com/vector/healthy-throat-color-icon-oral-cavity-pharynx-and-esophagus-in-good-health-upper-gm1201667164-344708186>

(4) Gulp! When you swallow, the food goes into your esophagus. The esophagus is long and muscular and pushes food into your stomach.

The Stomach

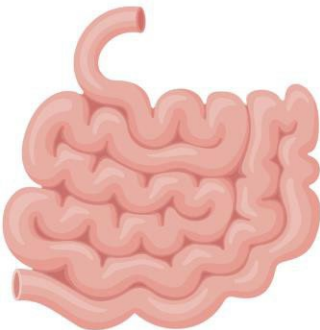


<https://www.istockphoto.com/vector/human-stomach-inside-and-outside-gm1161161807-318073928>

(5) Your stomach's job is to store food and break it down even more. Glands in your stomach make acid. The acid helps digest food. It also kills bacteria.

(6) Does your stomach growl when you are hungry? Actually, it growls after you eat, too. It just doesn't sound as loud. You can hear growling more when your stomach is empty because the gas sounds are not muffled by a full stomach.

The Small Intestine



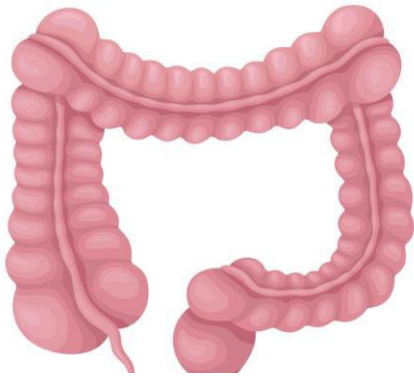
<https://www.istockphoto.com/vector/small-intestine-human-internal-organ-gm1169433352-323276165>

(7) When partially digested food leaves your stomach, it travels to the intestines. The intestines have two parts: the small intestine and the large intestine. The names are confusing. The small intestine is not really small at all, but it is coiled, or bunched up in your stomach. If it were

uncoiled and spread end to end, it would be about 20 feet long! That's about as long as a small school bus!

(8) The small intestine is where most of your food is actually digested. Your small intestine absorbs (soaks up) food in its lining. Then, it releases nutrients into your blood for your body to use.

The Large Intestine



<https://www.istockphoto.com/vector/large-intestine-human-internal-organ-gm1169327653-323202635>

(9) The large intestine is thicker than the small intestine. If you uncoiled it, it would be about 5 feet long. The large intestine is responsible for absorbing vitamins and water.

(10) Now all that is left is waste. Waste is the stuff your body cannot use and excretes.

(11) Wow! Digestion is a complex process! But your body does it every day. Pretty amazing, isn't it?

Item #	1
Discipline	ELA
Grade Level	1
Assessment Type	End of Unit
Unit/Domain Title	2
TEKS	TEKS 1.7.C Response skills: listening, speaking, reading, writing, and thinking using multiple texts. The student responds to an increasingly challenging variety of sources that are read, heard, or viewed. The student is expected to: C use text evidence to support an appropriate response.
Objective	Students will recall details to determine what is most important.
DOK Level	1
Question Type	Multiple Choice

PASSAGE

Element	Value
passage_link	
passage_title	Your Amazing Digestive System!

QUESTION


Element	Value
stimulus	Think about what you learned in the passage, “Your Amazing Digestive System!”
question_stem	According to the passage, what helps break down food in the stomach?
prompt	<i>Select the best answer.</i>
randomize_answer_choices	yes
answer_a	bile
answer_b	acid
answer_c	water
correct_answer	b
correct_answer_rationale	Your stomach’s job is to break food down even more. Glands in your stomach make acid. The acid helps digest food.
incorrect_answer_1	a
incorrect_answer_1_rationale	Bile is a substance made in the liver, not the stomach
incorrect_answer_2	c
incorrect_answer_2_rationale	Water can be found in the stomach, but it does not break down food.
scoring	Exact match; 1 point


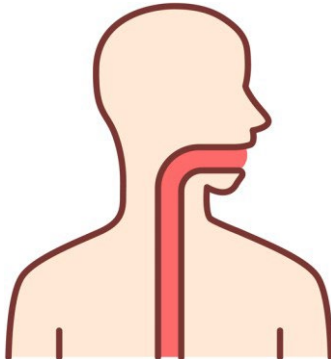

Item #	2
Discipline	ELA
Grade Level	1
Assessment Type	End of Unit
Unit/Domain Title	2
TEKS	TEKS 1.7.C Response skills: listening, speaking, reading, writing, and thinking using multiple texts. The student responds to an increasingly challenging variety of sources that are read, heard, or viewed. The student is expected to: (C) use text evidence to support an appropriate response
Objective	Students will recall details from the text to support a response.
DOK Level	1
Question Type	Multiple Choice

PASSAGE

Element	Value
passage_link	
passage_title	Your Amazing Digestive System!

QUESTION

Element	Value
stimulus	Think about what you learned in the passage, "Your Amazing Digestive System!"
question_stem	According to the passage, where in the body does digestion start?
prompt	Select the best answer.
randomize_answer_choices	yes
answer_a	mouth  https://pixabay.com/vectors/mouth-smile-teeth-hygiene-lips-5379259/

answer_b	<p>stomach</p>  <p>https://www.istockphoto.com/vector/human-stomach-inside-and-outside-gm1161161807-318073928</p>
answer_c	<p>esophagus</p>  <p>https://www.istockphoto.com/vector/healthy-throat-color-icon-oral-cavity-pharynx-and-esophagus-in-good-health-upper-gm1201667164-344708186</p>
correct_answer	<p>mouth</p>  <p>https://pixabay.com/vectors/mouth-smile-teeth-hygiene-lips-5379259/</p>
correct_answer_rationale	<p>When you take a bite out of an apple, your teeth cut and crush it. Your tongue, a big muscle, helps push food against your teeth as you chew. Saliva helps break down the chunks.</p>
incorrect_answer_1	<p>b</p>
incorrect_answer_1_rationale	<p>Although the stomach is an important part of the digestive system, digestion does not start in the stomach.</p>
incorrect_answer_2	<p>c</p>

incorrect_answer_2_rationale	The esophagus is how food travels from the mouth to the stomach after it is swallowed, so this is not where digestion starts.
scoring	Exact match; 1 point

Item #	3
Discipline	ELA
Grade Level	1
Assessment Type	End of Unit
Unit/Domain Title	2
TEKS	TEKS 1.7.C Response skills: listening, speaking, reading, writing, and thinking using multiple texts. The student responds to an increasingly challenging variety of sources that are read, heard, or viewed. The student is expected to: (C)use text evidence to support an appropriate response.
Objective	Students will recall important information from the text.
DOK Level	1
Question Type	Multiple Choice

PASSAGE

Element	Value
passage_link	
passage_title	Your Amazing Digestive System!

QUESTION

Element	Value
stimulus	Think about what you learned in the passage, “Your Amazing Digestive System!”
question_stem	Listen to these sentences from the passage. “The large intestine is thicker than the small intestine. If you uncoiled it, it would be about 5 feet long. The large intestine is responsible for absorbing vitamins and water.” What are these sentences mainly about?
prompt	<i>Select the best answer.</i>
randomize_answer_choices	yes
answer_a	a thick coil
answer_b	vitamins and water
answer_c	the large intestine
correct_answer	the large intestine
correct_answer_rationale	The sentences describe the large intestine and its function.
incorrect_answer_1	a
incorrect_answer_1_rationale	The large intestine is like a thick coil that is about 5 feet long,

	but it is not an actual coil.
incorrect_answer_2	b
incorrect_answer_2_rationale	The large intestine is responsible for absorbing vitamins and water.
scoring	Exact match; 1 point

Item #	4
Discipline	ELA
Grade Level	1
Assessment Type	End of Unit
Unit/Domain Title	2
TEKS	TEKS 1.9.D.i Multiple genres: listening, speaking, reading, writing, and thinking using multiple texts--genres. The student recognizes and analyzes genre-specific characteristics, structures, and purposes within and across increasingly complex traditional, contemporary, classical, and diverse texts. The student is expected to: (D) recognize characteristics and structures of informational text, including: (i) the central idea and supporting evidence with adult assistance.
Objective	Students will identify the central idea.
DOK Level	2
Question Type	Multiple Choice

PASSAGE

Element	Value
passage_link	
passage_title	Your Amazing Digestive System!

QUESTION

Element	Value
stimulus	Think about what you learned in the passage, "Your Amazing Digestive System!"
question_stem	What is this passage mostly about?
prompt	<i>Select the best answer.</i>
randomize_answer_choices	yes
answer_a	the reasons why your stomach grows
answer_b	the differences between the small intestine and the large intestine
answer_c	the parts of the digestive system and how it works
correct_answer	c
correct_answer_rationale	The text identifies and explains each part of the digestive system.
incorrect_answer_1	a
incorrect_answer_1_rationale	The passage provides some information about why stomachs growl. However, this is only a detail and not what the passage is mostly about.

incorrect_answer_2	b
incorrect_answer_2_rationale	The passage explains the difference between the small and large intestine to provide a detail, but this is not the central idea of the text.
scoring	Exact match; 1 point

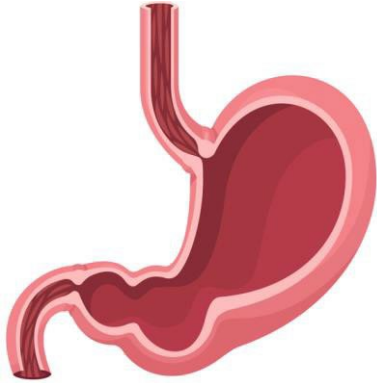
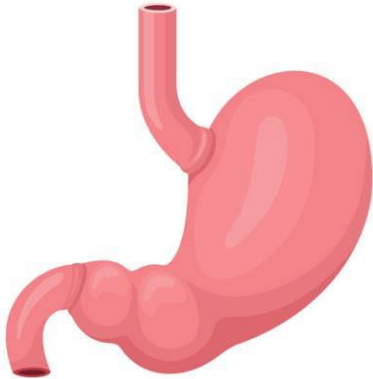
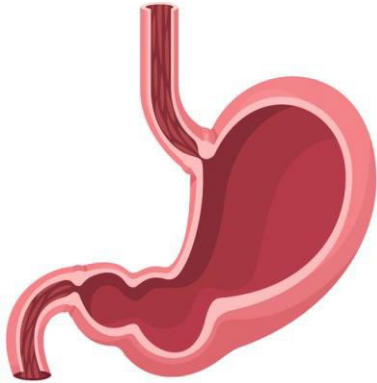
Item #	5
Discipline	ELA
Grade Level	1
Assessment Type	End of Unit
Unit/Domain Title	2
TEKS	TEKS 1.6.E Comprehension skills: listening, speaking, reading, writing, and thinking using multiple texts. The student uses metacognitive skills to both develop and deepen comprehension of increasingly complex texts. The student is expected to: (E) make connections to personal experiences, ideas in other texts, and society with adult assistance.
Objective	Students will make connections to personal experiences.
DOK Level	1
Question Type	Multiple Choice

PASSAGE

Element	Value
passage_link	
passage_title	Your Amazing Digestive System!

QUESTION

Element	Value
stimulus	Think about what you learned in the passage, “Your Amazing Digestive System!”
question_stem	Valeria is in class. Her stomach growls loudly. Based on information in the passage, why is Valeria’s stomach growling so loudly?
prompt	<i>Select the best answer.</i>
randomize_answer_choices	yes
answer_a	Her stomach is empty.

	 <p>https://www.istockphoto.com/vector/human-stomach-inside-and-outside-gm1161161807-318073928</p>
answer_b	<p>Her stomach is full.</p>  <p>https://www.istockphoto.com/vector/human-stomach-inside-and-outside-gm1161161807-318073928</p>
correct_answer	<p>a Her stomach is empty.</p>  <p>https://www.istockphoto.com/vector/human-stomach-inside-and-outside-gm1161161807-318073928</p>

correct_answer_rationale	According to the passage, a person can hear the sounds of gases in the stomach when there is less food in the stomach to hide the sound. Thus, the growling can be heard when someone is hungry.
incorrect_answer	b
incorrect_answer_rationale	Although a full stomach can growl or make noise, it is not likely to be very loud.
scoring	Exact match; 1 Point

Item #	6
Discipline	ELA
Grade Level	1
Assessment Type	End of Unit
Unit/Domain Title	2
TEKS	TEKS 1.6.G Comprehension skills: listening, speaking, reading, writing, and thinking using multiple texts. The student uses metacognitive skills to both develop and deepen comprehension of increasingly complex texts. (G) evaluate details to determine what is most important with adult assistance.
Objective	Students will recall details to determine important ideas.
DOK Level	1
Question Type	Multiple Choice

PASSAGE

Element	Value
passage_link	
passage_title	Your Amazing Digestive System!

QUESTION

Element	Value
stimulus	Think about what you learned in the passage, "Your Amazing Digestive System!"
question_stem	What does your mouth do to help with digestion?
prompt	<i>Select the best answer.</i>
randomize_answer_choices	yes
answer_a	absorb water
answer_b	chew food
answer_c	make bile
correct_answer	b
correct_answer_rationale	When you take a bite out of an apple, your teeth cut and crush it. Your tongue, a big muscle, helps push food against your teeth as you chew.
incorrect_answer_1	a
incorrect_answer_1_rationale	The mouth can drink water, but it does not absorb it. The large intestine helps with digestion by absorbing water.
incorrect_answer_2	c
incorrect_answer_2_rationale	The liver helps with digestion by making bile. The mouth does not make bile.
scoring	Exact match; 1 point

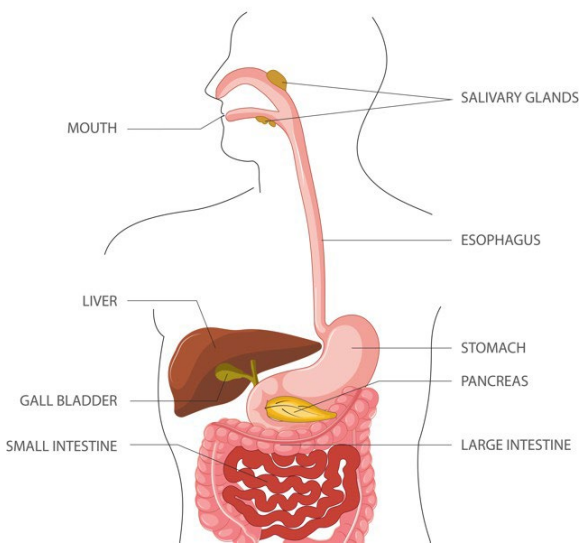

Item #	7
Discipline	ELA
Grade Level	1
Assessment Type	End of Unit
Unit/Domain Title	2
TEKS	TEKS 1.9.D.ii Multiple genres: listening, speaking, reading, writing, and thinking using multiple texts--genres. The student recognizes and analyzes genre-specific characteristics, structures, and purposes within and across increasingly complex traditional, contemporary, classical, and diverse texts. The student is expected to: (D) recognize characteristics and structures of informational text, including: (ii) features and simple graphics to locate or gain information.
Objective	Students will identify information in simple graphics.
DOK Level	1
Question Type	Multiple Choice

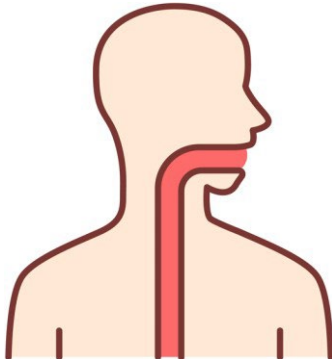
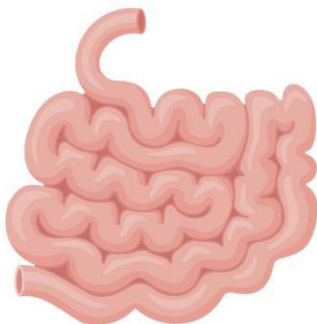
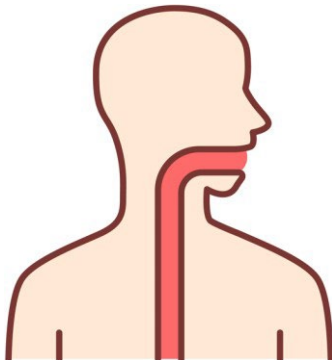
PASSAGE

Element	Value
passage_link	
passage_title	Your Amazing Digestive System!

QUESTION

Element	Value
stimulus	Think about what you learned in the passage, "Your Amazing Digestive System!"
question_stem	Look at this diagram from the passage.

	<p style="text-align: center;">DIGESTIVE SYSTEM</p>  <p>https://www.istockphoto.com/vector/human-digestive-system-anatomical-vector-illustration-gm1441954838-481505639?searchscope=image%2Cfilm</p> <p>What is the name of the long tube that goes from your mouth to your stomach?</p>
prompt	Select the best answer.
randomize_answer_choices	yes
answer_a	<p>mouth</p>  <p>https://pixabay.com/vectors/mouth-smile-teeth-hygiene-lips-5379259/</p>
answer_b	esophagus

	 <p>https://www.istockphoto.com/vector/healthy-throat-color-icon-oral-cavity-pharynx-and-esophagus-in-good-health-upper-gm1201667164-344708186</p>
answer_c	<p>small intestine</p>  <p>https://www.istockphoto.com/vector/small-intestine-human-internal-organ-gm1169433352-323276165</p>
correct_answer	<p>b esophagus</p>  <p>https://www.istockphoto.com/vector/healthy-throat-color-icon-oral-cavity-pharynx-and-esophagus-in-good-health-upper-gm1201667164-344708186</p>
correct_answer_rationale	The esophagus is long and muscular and pushes food into your stomach.
incorrect_answer_1	a
incorrect_answer_1_rationale	The mouth is an opening, not a tube.

incorrect_answer_2	c
incorrect_answer_2_rationale	The small intestine does connect to the stomach, but not from the mouth.
scoring	Exact match; 1 point

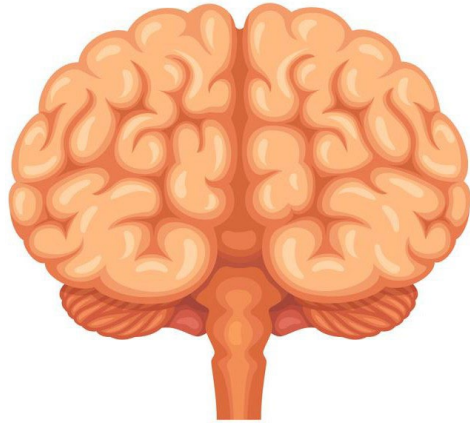
Item #	8
Discipline	ELA
Grade Level	1
Assessment Type	End of Unit
Unit/Domain Title	2
TEKS	TEKS 1.7.C Response skills: listening, speaking, reading, writing, and thinking using multiple texts. The student responds to an increasingly challenging variety of sources that are read, heard, or viewed. The student is expected to: (C) use text evidence to support an appropriate response.
Objective	Students will recall key information from the text.
DOK Level	1
Question Type	Multiple Choice

PASSAGE

Element	Value
passage_link	
passage_title	Your Amazing Digestive System!

QUESTION

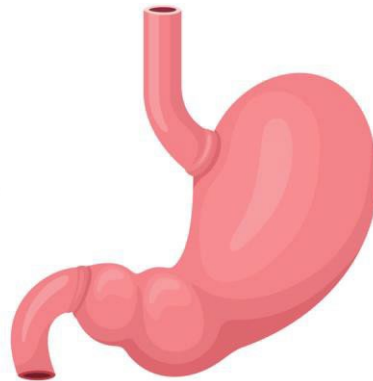
Element	Value
stimulus	Think about what you learned in the passage, “Your Amazing Digestive System!”
question_stem	According to the text, which body part is in the digestive system?
prompt	<i>Select the best picture.</i>
randomize_answer_choices	yes
answer_a	brain



<https://www.istockphoto.com/vector/human-brain-anatomy-front-view-gm1213930826-353000674>

answer_b

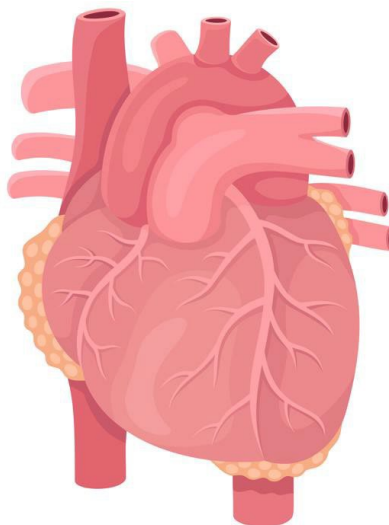
stomach




<https://www.istockphoto.com/vector/human-stomach-inside-and-outside-gm1161161807-318073928>

answer_c

heart



	https://www.istockphoto.com/vector/human-heart-anatomy-gm1164421334-320068789
correct_answer	<p>b</p> <p>stomach</p>  <p>https://www.istockphoto.com/vector/human-stomach-inside-and-outside-gm1161161807-318073928</p>
correct_answer_rationale	The stomach is a part of the digestive system. The brain and heart are parts of other systems.
incorrect_answer_1	a
incorrect_answer_1_rationale	The brain is an organ that is not a part of the digestive system.
incorrect_answer_2	c
incorrect_answer_2_rationale	The heart is an organ that is not a part of the digestive system.
scoring	Exact match; 1 point




Item #	9
Discipline	ELA
Grade Level	1
Assessment Type	End of Unit
Unit/Domain Title	2
TEKS	TEKS 1.3.B Developing and sustaining foundational language skills: listening, speaking, reading, writing, and thinking--vocabulary. The student uses newly acquired vocabulary expressively. The student is expected to (B) use illustrations and texts the student is able to read or hear to learn or clarify word meanings.
Objective	Students will use text to clarify word meanings.
DOK Level	2
Question Type	Multiple Choice

PASSAGE

Element	Value
passage_link	
passage_title	Your Amazing Digestive System!

QUESTION

Element	Value
stimulus	Think about what you learned in the passage, "Your Amazing Digestive System!"
question_stem	Listen to the sentences from the passage. "The small intestine is not really small at all... If it were uncoiled and spread end to end , it would be about 20 feet long!" Select the picture that shows something "uncoiled and spread end to end."
prompt	Select the best picture.
randomize_answer_choices	yes
answer_a	snake

	 <p>https://www.istockphoto.com/vector/cartoon-snake-drawing-gm1264842330-370559217</p>
answer_b	<p>rope</p>  <p>https://www.istockphoto.com/vector/set-of-looped-ropes-with-metal-holes-rope-threads-gm1165879715-320951955</p>
answer_c	<p>broom</p>  <p>https://www.istockphoto.com/vector/mop-and-broom-for-cleaning-gm1028718088-275743599</p>
correct_answer	b
correct_answer_rationale	The rope is uncoiled.
incorrect_answer_1	a
incorrect_answer_1_rationale	The snake is coiled up.
incorrect_answer_2	c
incorrect_answer_2_rationale	A tool like a broom can never be coiled up, so it would not become “uncoiled”
scoring	Exact match; 1 point

Item #	10
Discipline	ELA
Grade Level	1
Assessment Type	End of Unit
Unit/Domain Title	2
TEKS	TEKS 1.3.B Developing and sustaining foundational language skills: listening, speaking, reading, writing, and thinking--vocabulary. The student uses newly acquired vocabulary expressively. The student is expected to: (B) use illustrations and texts the student is able to read or hear to learn or clarify word meanings.
Objective	Students will use text to clarify word meanings.
DOK Level	2
Question Type	Multiple Choice

PASSAGE

Element	Value
passage_link	
passage_title	Your Amazing Digestive System!

QUESTION

Element	Value
stimulus	Think about what you learned in the passage, "Your Amazing Digestive System!"
question_stem	Listen to the sentence from the passage. "Your stomach's job is to store food and <u>break it down</u> even more." What does the author mean by the phrase <i>break it down</i> ?
prompt	Select the best answer.
randomize_answer_choices	yes
answer_a	to cause the stomach to not work
answer_b	to make the food into smaller pieces
answer_c	to stop the food from moving
correct_answer	b
correct_answer_rationale	In this context, break it down means to make the food smaller so it can continue to move through your digestive system.
incorrect_answer_1	a
incorrect_answer_1_rationale	While the phrase "break it down" can be used when referring to something that is no longer working, this is not the correct usage in this context.
incorrect_answer_2	c

incorrect_answer_2_rationale	While the phrase “break down” can be used to mean to interrupt something, this is not the intended meaning within the context of the passage.
scoring	Exact match; 1 point

Item #	11
Discipline	ELA
Grade Level	1
Assessment Type	End of Unit
Unit/Domain Title	2
TEKS	TEKS 1.7.F Response skills: listening, speaking, reading, writing, and thinking using multiple texts. The student responds to an increasingly challenging variety of sources that are read, heard, or viewed. The student is expected to: (F) respond using newly acquired vocabulary as appropriate.
Objective	Students will use newly acquired vocabulary.
DOK Level	2
Question Type	Multiple Choice

PASSAGE

Element	Value
passage_link	
passage_title	Your Amazing Digestive System!

QUESTION

Element	Value
stimulus	Think about what you learned in the passage, “Your Amazing Digestive System!”
question_stem	Listen to this sentence from the passage. “The liver makes bile that breaks down fat.” Which word from this sentence is something that is not part of the human body?
prompt	<i>Select the best answer.</i>
randomize_answer_choices	yes
answer_a	liver
answer_b	down
answer_c	bile
correct_answer	b
correct_answer_rationale	The <i>liver</i> and <i>bile</i> are part of the human body, and <i>down</i> is not.
incorrect_answer_1	a
incorrect_answer_1_rationale	A liver is an organ found in the body.
incorrect_answer_2	c
incorrect_answer_2_rationale	Bile is a substance produced by the liver in the body.

scoring	Exact match; 1 point
---------	----------------------




Item #	12
Discipline	ELA
Grade Level	1
Assessment Type	End of Unit
Unit/Domain Title	2
TEKS	TEKS 1.3.B Developing and sustaining foundational language skills: listening, speaking, reading, writing, and thinking--vocabulary. The student uses newly acquired vocabulary expressively. The student is expected to: (B) use illustrations and texts the student is able to read or hear to learn or clarify word meanings
Objective	Students will use the text to clarify word meanings.
DOK Level	2
Question Type	Multiple Choice

PASSAGE

Element	Value
passage_link	
passage_title	Your Amazing Digestive System!

QUESTION

Element	Value
stimulus	Think about what you learned in the passage, "Your Amazing Digestive System!"
question_stem	Listen to the sentence from the passage. "Your small intestine <u>absorbs</u> (soaks up) food in its lining." What image best shows something that <u>absorbs</u> ?
prompt	Select the best answer.
randomize_answer_choices	yes
answer_a	sponge

	 <p>https://pixabay.com/photos/sponge-cleaning-sponge-clean-rinse-3081410/</p>
answer_b	<p>jellyfish</p>  <p>https://www.istockphoto.com/photo/pelagia-noctiluca-jellyfish-in-the-sea-close-up-gm1087284698-291710750</p>
answer_c	<p>colored pencils</p>  <p>https://www.istockphoto.com/photo/wooden-colored-pencils-multi-colored-for-wallpaper-background-and-use-text-placement-gm1448483714-485986820</p>
correct_answer	a
correct_answer_rationale	A sponge is used to soak up liquids.
incorrect_answer_1	b
incorrect_answer_1_rationale	A jellyfish swims in the ocean, which is liquid, but does not absorb the water.
incorrect_answer_2	c
incorrect_answer_2_rationale	Colored pencils are made of a solid material and would not absorb liquid like a sponge.
scoring	Exact match; 1 point

© 2024. Texas Education Agency. Portions of this work are adapted, with permission, from originals created by Amplify Education, Inc. (amplify.com) and the Core Knowledge Foundation (coreknowledge.org).

This work is licensed under a Creative Commons Attribution-NonCommercial-ShareAlike 4.0 International License.

You are free:

to Share—to copy, distribute, and transmit the work

to Remix—to adapt the work

Under the following conditions:

Attribution—You must attribute any adaptations of the work in the following manner:

This work is based on original works of the Texas Education Agency, as well as prior works by Amplify Education, Inc. (amplify.com) and the Core Knowledge Foundation (coreknowledge.org) and is made available under a Creative Commons Attribution- NonCommercial-ShareAlike 4.0 International License. This does not in any way imply endorsement by those authors of this work.

Noncommercial—You may not use this work for commercial purposes.

Share Alike—If you alter, transform, or build upon this work, you may distribute the resulting work only under the same or similar license to this one.

With the understanding that:

For any reuse or distribution, you must make clear to others the license terms of this work. The best way to do this is with a link to this web page:

<https://creativecommons.org/licenses/by-nc-sa/4.0/>

Trademarks and trade names are shown in this book strictly for illustrative and educational purposes and are the property of their respective owners. References herein should not be regarded as affecting the validity of said trademarks and trade names.

This work is based on prior works of Amplify Education, Inc. (amplify.com) and the Core Knowledge Foundation (coreknowledge.org) made available under a Creative Commons Attribution- NonCommercial-ShareAlike 4.0 International License. This does not in any way imply endorsement by those authors of this work.

Printed in the USA